

## Additional Resources

- 11.1. Southwestern Ontario Stroke Network (SWOSN) Information
- 11.2 Hemispheres Stroke Competency Information
- 11.3 Supplemental Stroke Resources



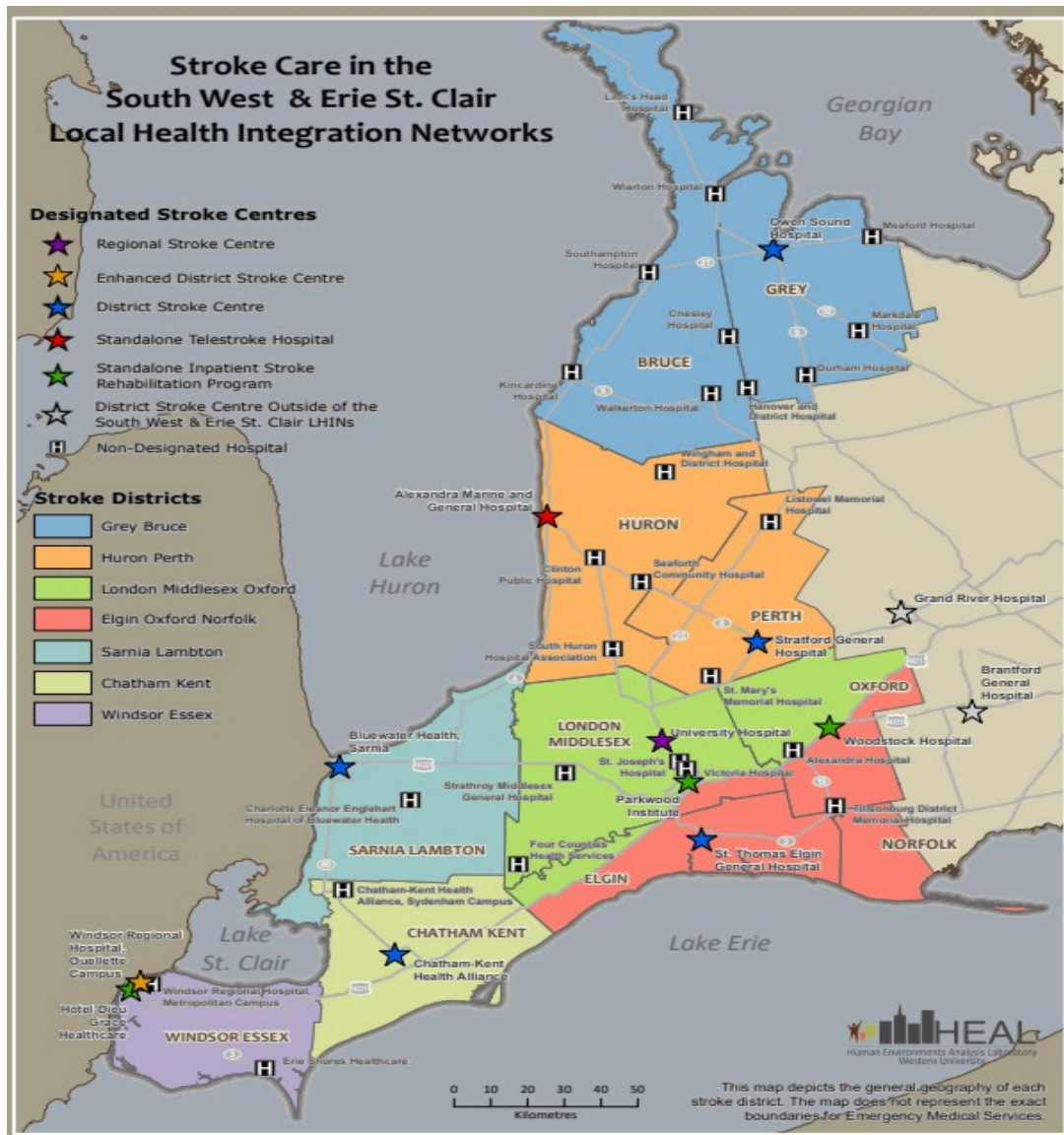
## SOUTHWESTERN ONTARIO STROKE NETWORK (SWOSN)

**The Southwestern Ontario Stroke Network (SWOSN)** is 1 of 11 stroke networks in Ontario providing leadership and planning to support stroke best practices across the care continuum. Our program collaborates with hospitals and agencies within the community to support regional and local quality improvement strategies in stroke care and prevention. As part of the Ontario stroke system, our vision is **FEWER STROKES. BETTER OUTCOMES.** Some key functions at SWOSN are:

- to identify and implement best practices,
- promote equity of access to care and services,
- foster effective use of resources through innovation, quality improvement and integration/coordination of service delivery, and
- to support system design and evaluation

The SWOSN mission is to continuously improve stroke prevention, care, recovery and re-integration.

The SWOSN team is based out of the Regional Stroke Centre at University Hospital, London Health Sciences Centre in London Ontario. The SWOSN geography spans 10 counties with a population of 1.6 million people. Refer to the “Stroke Care in the South West & Erie St. Clair Local Health Integration Networks” map, on the next page for a detailed look at the stroke centers within our geography.



## PARTNERSHIPS:

The Southwestern Ontario Stroke Network partners with organizations and agencies across the continuum of stroke care to explore opportunities to promote the uptake of best practices. Partnerships include but are not limited to: CorHealth, Heart & Stroke Foundation, Public Health Units, Stroke Recovery Associations, Hospitals, CCACs, Long Term Care Homes, and Voluntary Organizations. In addition, there are several advisory committees to the regional network and a regional steering committee.

**CorHealth:** In 2016, the Cardiac Care Network of Ontario and the Ontario Stroke Network merged to form one organization, with a mandate spanning cardiac, stroke and vascular care in the province. On June 22, 2017, after a year of transition, the new entity became CorHealth Ontario. CorHealth Ontario provides strategic leadership to improve cardiac, stroke and vascular care in the province.

**Heart and Stroke:** The Heart and Stroke Foundation is a national organization. Specifically, The Heart and Stroke Foundation, has established the Canadian Stroke Best Practice guidelines that highlight the best practices in stroke care, across the continuum of care. The guidelines undergo a refresh every two years.



# ACUTE STROKE UNIT ORIENTATION

2023

## 11.2 HEMISPHERE'S STROKE COMPETENCY SERIES



- E-learning program
- One year license per participant
- Topics include:
  - Brain anatomy
  - Stroke pathophysiology
  - Pre-hospital & ED stroke
  - Hemorrhagic stroke
  - Ischemic stroke
  - Stroke prevention
  - NIHSS training and certification is available in this program as well
  - Includes tests and certificate of completion  
<http://www.apexinnovations.com/Hemispheres.php>

Contact your district stroke coordinator to inquire about participation in this education resource.

# STROKE ORGANIZATIONS: LIST AND LINKS

Heart and Stroke Foundation of Canada <http://www.heartandstroke.ca>

The Heart and Stroke Foundation, a volunteer-based health charity, leads in eliminating heart disease and stroke and reducing their impact through the advancement of research and its application, the promotion of healthy living and advocacy. The Heart and Stroke Foundation of Canada is a federation of 10 provincial Foundations, led and supported by a force of more than 140,000 volunteers.

Heart and Stroke Foundation of Ontario, Professional Education <http://www.heartandstroke.ca/profed>

The Heart and Stroke Foundation of Ontario Professional Education website's aim is to assist all healthcare providers by providing:

- Sound scientific cardio/cerebrovascular-related information
- Best practice guidelines
- Educational programs
- Resources that can be ordered or accessed to help you to help your patients

Canadian Stroke Consortium <http://www.strokeconsortium.ca>

Created, owned and operated by its members, the Canadian Stroke Consortium (CSC) is the nation's premiere neurologist network. It is an academic alliance committed to the pursuit of anti-stroke therapies by designing and/or conducting research projects and clinical trials.

Canadian Stroke Network <http://www.canadianstrokenetwork.ca>

The Canadian Stroke Network's mission is to reduce the impact of stroke on Canadians through collaborations that create valuable new knowledge in stroke; to ensure the best knowledge is applied; and to build Canadian capacity in stroke.

National Stroke Association <http://www.stroke.org>

National Stroke Association achieves its mission to lower the incidence and impact of stroke by developing compelling community outreach programs, calling for continued improvement in the quality of stroke patient care and educating both health care professionals and the general public about stroke. Resources for both consumers and health care professionals.

National Institute of Neurological Disorders and Stroke (NINDS) <http://www.ninds.nih.gov>

The National Institute of Neurological Disorders and Stroke (NINDS) conducts and supports research on brain and nervous system disorders, created by the U.S. Congress in 1950, NINDS is one of the more than two dozen research institutes and centers that comprise the Nation Institutes of Health (NIH). The NIH, located in Bethesda Maryland, is an agency of the public Health service within the U.S. Department of Health and Human Services.

Continued over