

Southwestern Ontario (SWO) Stroke Network Community and Long Term Care Advisory Group

TERMS OF REFERENCE

MANDATE:

To provide support for the development, coordination, implementation and evaluation of stroke care in the community and long term care (LTC), in accordance with Ontario Stroke System's (OSS) vision, mission and strategic directions and regional priorities that support best practice stroke care. This committee will work towards the development of a comprehensive and coordinated plan for facilitating transitions from hospital and supporting the re-engagement of stroke survivors into the community.

GUIDING PRINCIPLES:

The SWO Stroke Network Community and LTC Advisory Group will work collaboratively to improve and standardize stroke care in the community and LTC. Within this context, the Group will recognize the following principles:

- Be person centred
- Enable care to be provided closer to home
- Build on best practices (e.g. Canadian Best Practice Recommendations for Stroke Care, Ontario Stroke System Best Practice Guidelines for Stroke Care, Rehabilitation Consensus Panel Report)
- Use a capacity building approach
- Share information to facilitate the development and implementation of district, regional and provincial stroke care initiatives
- Use evaluation and resources as a basis for continuous improvement
- Identify gaps and advocate for resources that address gaps in best practices
- Support research and knowledge transfer activities regionally and provincially
- Encourage academic linkages across the region

RESPONSIBILITIES:

From each member's perspective, they will share information with regard to the following:

1. Identification and prioritization of regional stroke needs in the community and LTC
2. Identification of gaps in services and programs and strategies to address them
3. Identification of barriers that prevent stroke survivors from re-engaging in community life and strategies to address them
4. Informing and engaging stakeholders through the creation of formal and informal opportunities for networking that build on existing initiatives and increase capacity for collaboration and coordination
5. Communication and sharing of lessons learned from pilots and other community initiatives to the appropriate channels, and identification and support of further opportunities to pilot stroke programs in LTC and the community that would benefit stroke survivors and their families

6. Identify and support of the provision of education and training activities that serve to enhance regional stroke care in the community and LTC in accordance with best practice
7. Review of the outcomes of the evaluation of regional and provincial initiatives in LTC and the community and recommend implementation strategies
8. Identification of the best cost-effective technologies that would help to develop communication and seamless transition between different partners in the community and recommend implementation strategies
9. Support for the promotion of awareness among the health care sector and stroke survivors and their families about re-engagement opportunities, and recommend implementation strategies
10. Act as a forum in which stroke care issues in the community sector are brought forward for discussion, action, and further regional planning
11. Each representative is responsible for keeping others within their organization informed of developments and to seek input as needed.

MEMBERSHIP:

Members of the SWO Stroke Network Community and LTC Advisory Group will be comprised of a broad range of community providers in SWO including:

- Community Care Access Centres
- LTC homes
- Retirement residences
- Community support service agencies
- Recreation service providers or facilities
- Hospitals (Acute / Rehab)
- Regional and District Stroke Centres
- Stroke Consumer Groups (e.g. Stroke Recovery Associations)
- Acquired Brain Injury Associations
- Stroke survivors and their family members
- Primary Care / Family Health Team

Members will serve on this committee for at least a two-year commitment/membership.

REPORTING RELATIONSHIP:

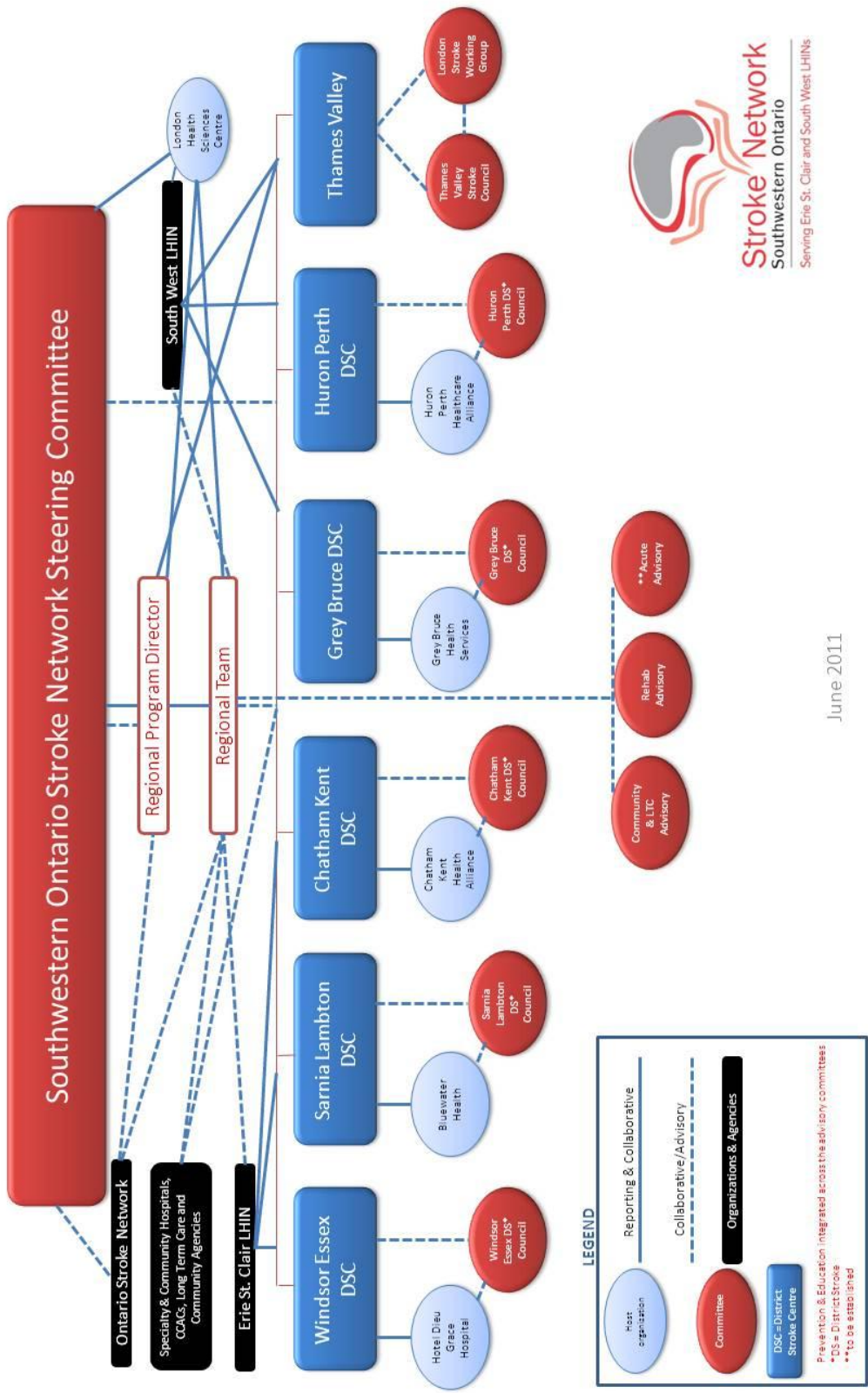
The SWO Stroke Network Community and LTC Advisory Group will communicate to the Regional Stroke Steering Committee through the SWO Stroke Network Community and Long-term Care Coordinator and the District Stroke Coordinators (see organizational chart below).

REVIEW OF THE TERMS OF REFERENCE:

The Terms of Reference shall be reviewed on a bi-annual basis.

SCHEDULE OF MEETINGS:

Meetings will be held every minimum 2 x per year, Spring & Fall. Ad hoc meetings will be held as required.



June 2011